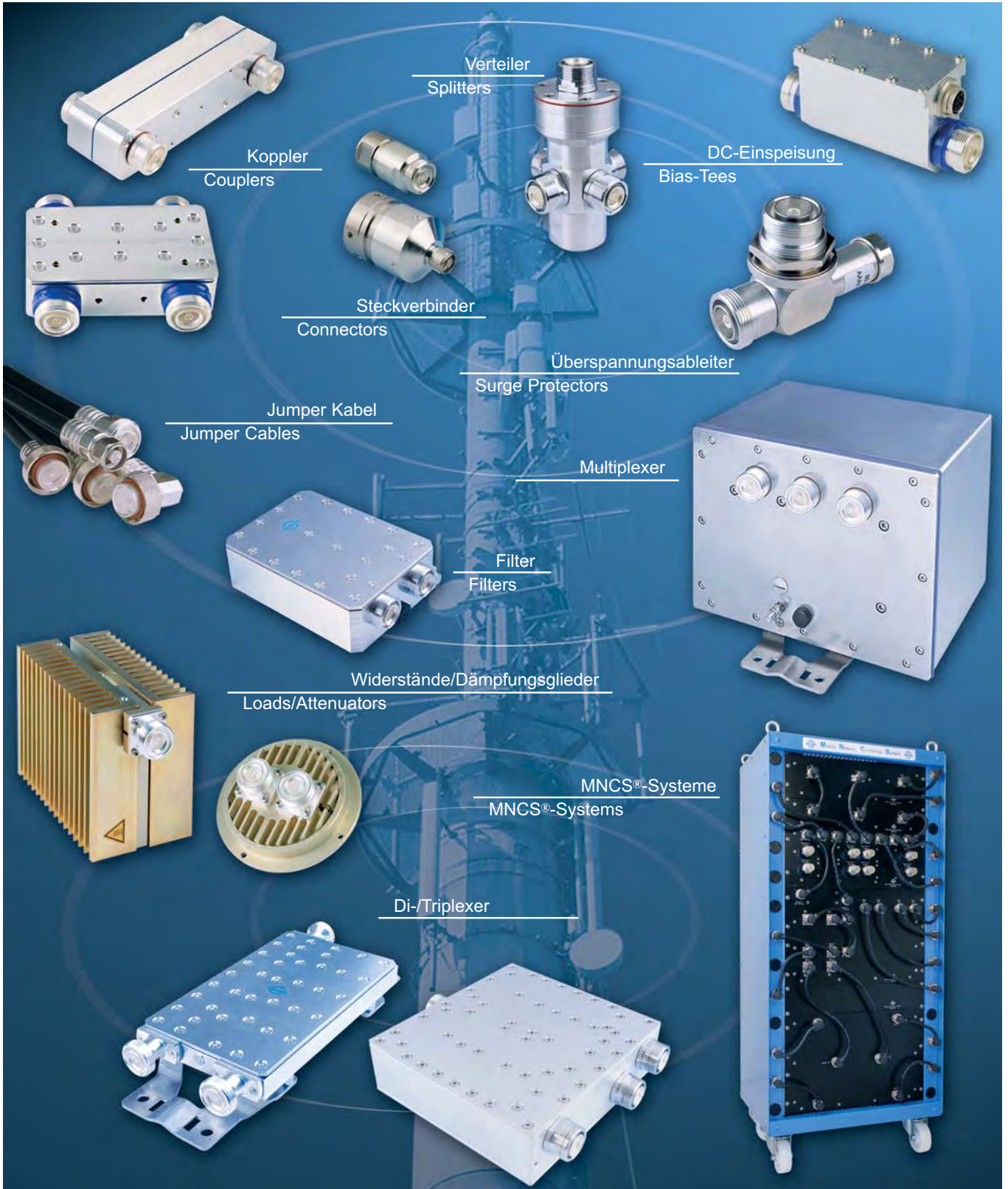




**MOBILFUNK
KOMponentEN UND SYSTEME**

**MOBILE COMMUNICATION
COMPONENTS AND SYSTEMS**







Das Stecksystem N kann bis 11 GHz eingesetzt werden (Präzisionsausführung bis 18 GHz).

Der Einsatz ist vorwiegend in Mobilfunkanwendungen mit hohen mechanischen und elektrischen Anforderungen.

SPINNER liefert aus diesem Grund ausschließlich Steckverbinder mit ungeschlitzter Außenleiterkontakt-hülse und einer speziellen Profildichtung im Stecker-kopf anstelle der nach IEC oder CECC vorgesehenen Flachdichtscheibe, um eine zuverlässige Dichtung sicherzustellen.

Die spezielle SPINNER-Profil Überwurfmutter unserer N-Stecker wird durch Einrollen am Außenleiter fixiert. Hierdurch wird das zulässige Anzugsdrehmoment wesentlich erhöht und der Kontaktdruck deutlich verbessert.

The Type N connector can be used at frequencies up to 11 GHz, high-precision types up to 18 GHz.

It is typically used in mobile communication applications with demanding mechanical and electrical requirements.

That is why SPINNER exclusively manufactures connectors with non-slotted outer conductor contacts and a special sealing profile in the connector head instead of the flat seal disk, specified by IEC or CECC. This ensures the most reliable sealing function.

The coupling nut on N connectors has the special SPINNER profile and is fastened by flanging in the outer conductor. This leads to a much higher tightening torque and unmatched contact pressure.

Die Steckverbinder der Serie N sind benannt nach Ihrem Erfinder Paul Neill, der diese Norm 1942 entwickelte. Der Name wird allerdings auch häufig aus der Bezeichnung Navy Connector abgeleitet.

The N connectors have been named after their inventor, Paul Neill, who developed this standard in 1942. But frequently the name is also related to Navy Connector.

COAXIAL CONNECTORS – TYPE N

Elektrisch / Electrical	IEC 60169-16	IEC	SPINNER	Bemerkung / Remark
Wellenwiderstand Characteristic impedance	10.2	50 Ω		
Frequenzbereich Frequency range	10.2	11 GHz 18 GHz		Stufe / Grade 2 Stufe / Grade 0 +1
VSWR	10.2	≤ 1.30		gerader Steckverbinder bei 11 GHz straight connector at 11 GHz
		≤ 1.50		Winkel-Steckverbinder bei 11 GHz right angle connector at 11 GHz
Innenleiter-Kontaktwiderstand Center contact resistance	10.2	≤ 1 mΩ		anfänglich initial
Außenleiter-Kontaktwiderstand Outer contact resistance	10.2	≤ 0.25 mΩ		anfänglich initial
Isolationswiderstand Insulation resistance	10.2	≥ 5 GΩ		anfänglich initial
Spannungsfestigkeit in Meereshöhe Proof voltage at sea level	10.2	2.5 kV		40...65 Hz
Arbeitsspannung in Meereshöhe Working voltage at sea level	10.2	1.0 kV	1.4 kV	40...65 Hz
Wirksamkeit der Abschirmung Screening effectiveness	10.2	≥ 90 dB	≥ 100 dB	

Mechanisch / Mechanical	IEC 60169-16	IEC	SPINNER	Bemerkung / Remark
Kupplungsdrehmoment Coupling torque	10.2	0.7 ... 1.1 Nm	3.0 Nm	
Prüfdrehmoment Proof torque	10.2	1.7 Nm	4.0 Nm	
Zugfestigkeit des Kupplungsmechanismus Tensile strength of coupling mechanism	10.2	450 N		
Mechanische Lebensdauer Mechanical lifetime	10.2	500	10000	Betätigungen Operations
Fesselung des Innenleiters Center contact captivation				ja yes

Umwelt / Environmental	IEC 60169-16	IEC	SPINNER	Bemerkung / Remark
Klimaklasse / Climatic category	10.2	55/155/21		
Temperaturbereich / Temperature range	10.2	-55 ... +155 °C		
Schutzgrad / Degree of protection		IP68		gesteckt/mated

Werkstoffe und Oberflächenbehandlung / Materials and Surface Finish

Federnde Kontaktteile Resilient contact members	hochfeste Cu-Legierung, versilbert (MIL-Typen Innenleiter vergoldet) high strength copper alloy, silver plated (MIL-types center conductor gold plated)			
Isolation Insulation	PTFE/FEP			
Innen- und Außenleiterkontaktteile Center and outer conductor parts	Cu-Legierung, versilbert (bei MIL-Typen Innenleiter vergoldet) Copper alloy, silver plated (with MIL-types center conductor gold plated)			
Sonstige Metallteile Other metal parts	Cu-Legierung, glanzvernickelt Copper alloy, bright nickel plated			
Dichtungen Gaskets	Silikonkautschuk Silicone rubber			

KOAXIALE STECKVERBINDER – SERIE N



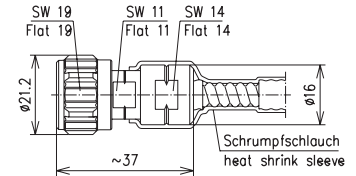
COAXIAL CONNECTORS – TYPE N

KABELSTECKVERBINDER FÜR SCF14-50 ■ CABLE CONNECTORS FOR SCF14-50

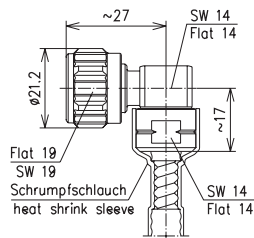
Ausführung Version	Ω	Bestell-Nummer Part Number
CAF® Schrumpfschlauch CAF® Heat shrink sleeve	50	BN 84 47 60 BN 75 78 60 BN 84 55 60



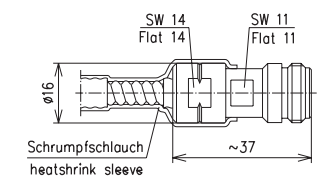
BN 84 47 60



BN 75 78 60



BN 84 55 60



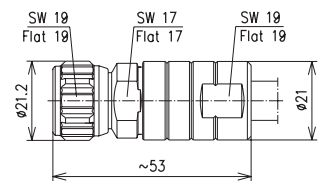
KABELSTECKVERBINDER FÜR SCF38-50 ■ CABLE CONNECTORS FOR SCF38-50

Ausführung Version	Ω	Bestell-Nummer Part Number
CAF® Profildichtung CAF® Profile gasket	50	BN 87 01 63 BN 87 01 65* BN 87 01 73 BN 84 60 63

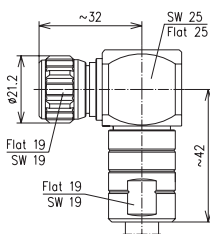
*) Innenleiter vergoldet
Inner conductor gold plated



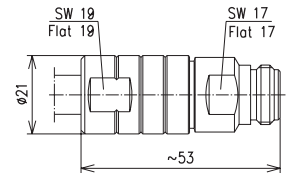
BN 87 01 63 / BN 87 01 65*



BN 87 01 73*



BN 84 60 63



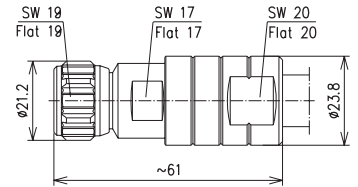
KABELSTECKVERBINDER FÜR SCF/UCF12-50 ■ CABLE CONNECTORS FOR SCF/UCF12-50

Ausführung Version	Ω	Bestell-Nummer Part Number
CAF® Profildichtung CAF® Profile gasket	50	BN 87 01 57 BN 87 01 56* BN 84 60 57

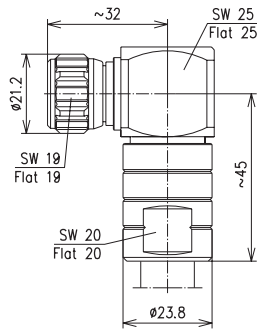
*) Innenleiter vergoldet
Inner conductor gold plated



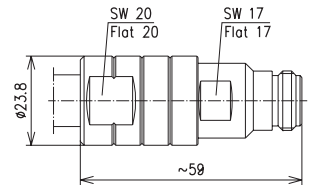
BN 87 01 57



BN 87 01 56*



BN 84 60 57

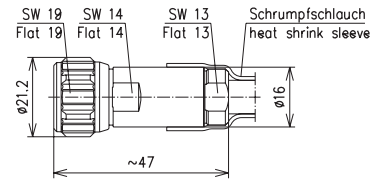


KABELSTECKVERBINDER FÜR LCF14-50 ■ CABLE CONNECTORS FOR LCF14-50

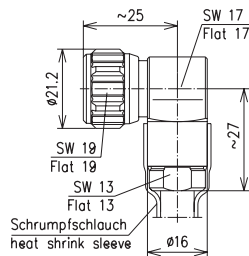
Ausführung Version	Ω	Bestell-Nummer Part Number
CAF® O-Ring	50	BN 84 47 55 BN 75 78 55 BN 84 55 55 BN 74 76 45



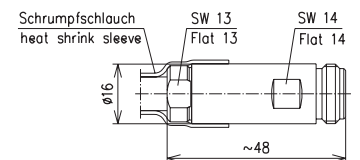
BN 84 47 55



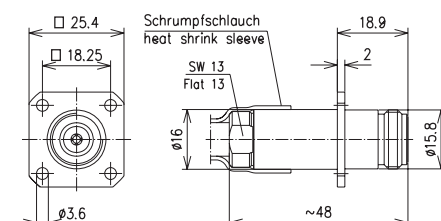
BN 75 78 55



BN 84 55 55



BN 74 76 45



KOAXIALE STECKVERBINDER – SERIE N



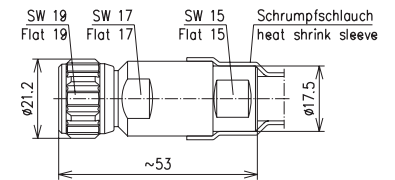
COAXIAL CONNECTORS – TYPE N

KABELSTECKVERBINDER FÜR LCF38-50 ■ CABLE CONNECTORS FOR LCF38-50

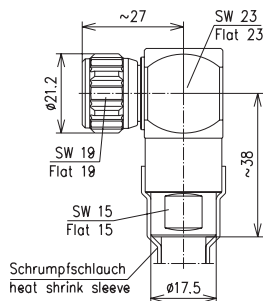
Ausführung Version	Ω	Bestell-Nummer Part Number
CAF® O-Ring	50	BN 87 01 69
		BN 87 01 70
		BN 84 60 69



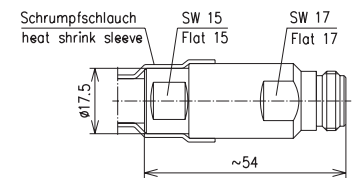
BN 87 01 69



BN 87 01 70



BN 84 60 69

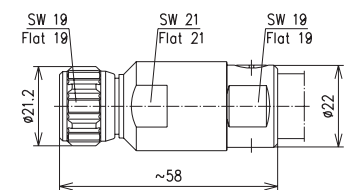


KABELSTECKVERBINDER FÜR LCF12-50 ■ CABLE CONNECTORS FOR LCF12-50

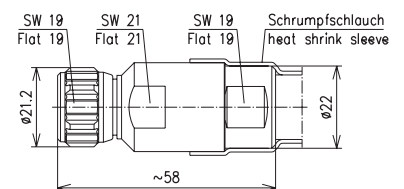
Ausführung Version	Ω	Bestell-Nummer Part Number
CAF® Plast 2000®	50	BN 87 01 68
CAF® O-Ring	50	BN 87 01 89
CAF® Plast 2000®	50	BN 87 01 67
CAF® O-Ring	50	BN 87 01 87
CAF® Plast 2000®	50	BN 84 60 68
CAF® O-Ring	50	BN 84 60 89
CAF® Plast 2000®	50	BN 74 75 44



BN 87 01 68



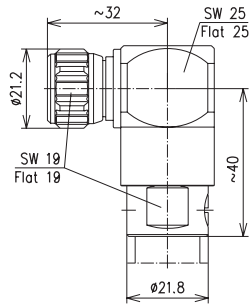
BN 87 01 89



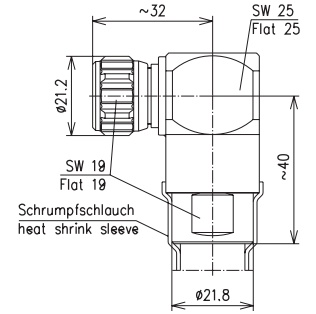
KABELSTECKVERBINDER FÜR LCF12-50 ■ CABLE CONNECTORS FOR LCF12-50



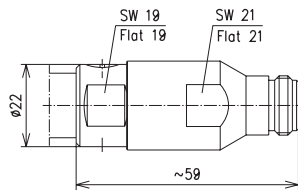
BN 87 01 67



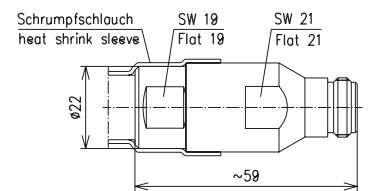
BN 87 01 87



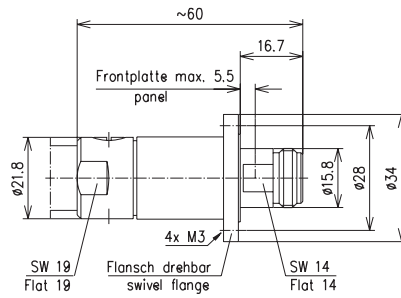
BN 84 60 68



BN 84 60 89



BN 74 75 44



COAXIAL CONNECTORS – TYPE N

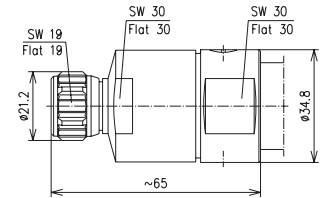
KABELSTECKVERBINDER FÜR LCF/UCF78-50 ■ CABLE CONNECTORS FOR LCF/UCF78-50

Ausführung Version	Ω	Bestell-Nummer Part Number
CAF® Plast 2000®	50	BN 70 67 40
TOPSPIN® O-Ring	50	BN 70 67 18*
CAF® Plast 2000®	50	BN 84 63 40
TOPSPIN® O-Ring	50	BN 84 63 18*

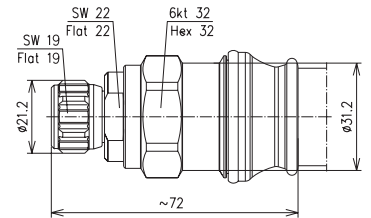
*) verwendbar für Al- und Cu-Kabel
suitable for aluminium and copper cables



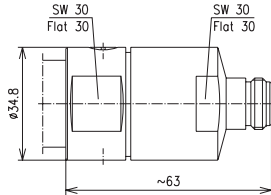
BN 70 67 40



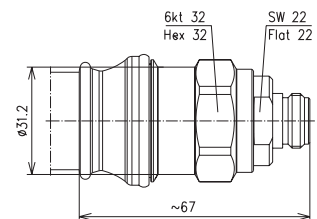
BN 70 67 18*



BN 84 63 40



BN 84 63 18*

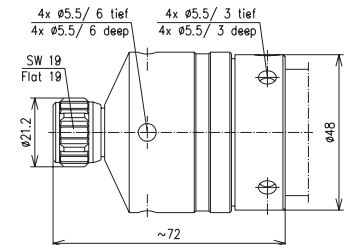


KABELSTECKVERBINDER FÜR UCF/LCFS114-50 ■ CABLE CONNECTORS FOR UCF/LCFS114-50

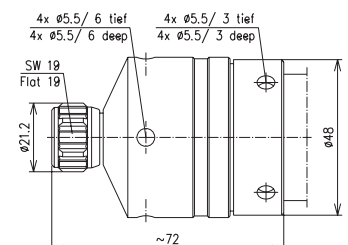
Ausführung Version	Ω	Bestell-Nummer Part Number
CAF® Plast 2000®	50	BN 70 67 42
CAF® O-Ring	50	BN 70 67 43
CAF® Plast 2000®	50	BN 84 63 42
CAF® O-Ring	50	BN 84 63 43



BN 70 67 42



BN 70 67 43

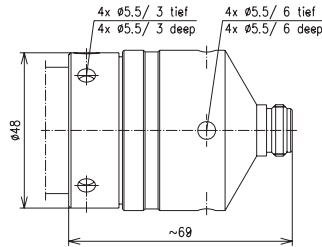


COAXIAL CONNECTORS – TYPE N

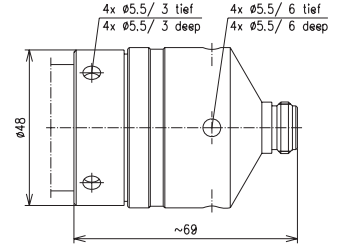
KABELSTECKVERBINDER FÜR UCF/LCFS114-50 ■ CABLE CONNECTORS FOR UCF/LCFS114-50



BN 84 63 42



BN 84 63 43



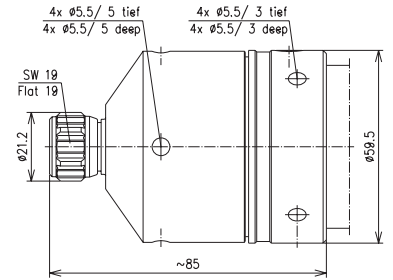
KABELSTECKVERBINDER FÜR LCF158-50 ■ CABLE CONNECTORS FOR LCF158-50

Ausführung Version	Ω	Bestell-Nummer Part Number
CAF® Plast 2000®	50	BN 70 67 44
TOPSPIN® O-Ring	50	BN 70 67 60*
CAF® Plast 2000®	50	BN 84 63 44
TOPSPIN® O-Ring	50	BN 84 63 60*

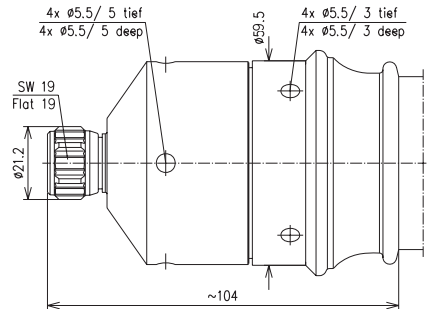
*) verwendbar für Al- und Cu-Kabel
suitable for aluminium and copper cables



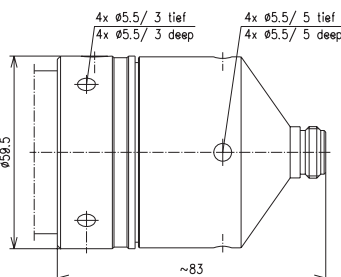
BN 70 67 44



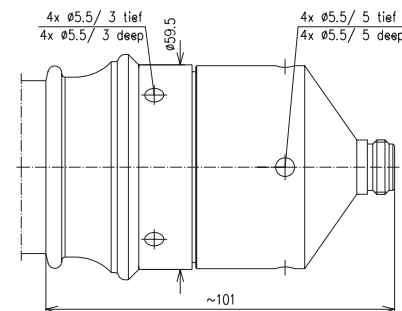
BN 70 67 60*



BN 84 63 44



BN 84 63 60*



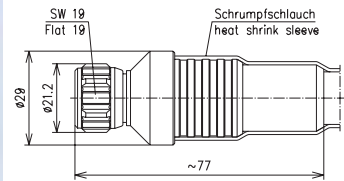
KOAXIALE STECKVERBINDER – SERIE N



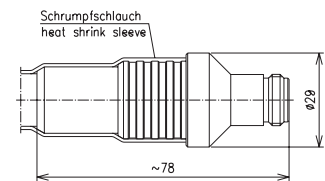
COAXIAL CONNECTORS – TYPE N

KABELSTECKVERBINDER FÜR RADIAFLEX® ■ CABLE CONNECTORS FOR RADIAFLEX®

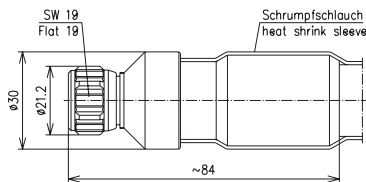
Kabel Typ Cable Type	Ω	Ausführung Version	Bestell-Nummer Part Number
RADIAFLEX® 12-50	50	Schrumpfschlauch Heat shrink sleeve	BN 55 71 10 BN 55 71 11
RADIAFLEX® 58-50 A	50	Schrumpfschlauch Heat shrink sleeve	BN 52 71 91 BN 52 71 92
RADIAFLEX® 78-50	50	Schrumpfschlauch Heat shrink sleeve	BN 55 71 50 BN 55 71 51
RADIAFLEX® 114-50/50 A RADIAFLEX® 158-50/50 A	50	Schrumpfschlauch Heat shrink sleeve	BN 55 71 61 BN 55 71 71



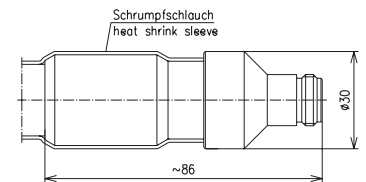
BN 55 71 10



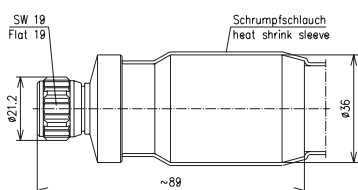
BN 55 71 11



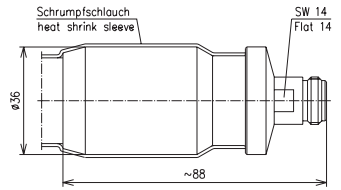
BN 52 71 91



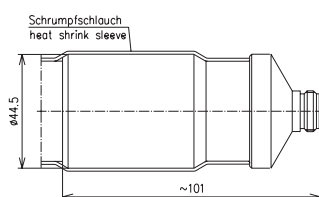
BN 52 71 92



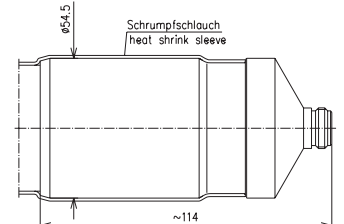
BN 55 71 50



BN 55 71 51



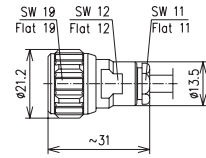
BN 55 71 61



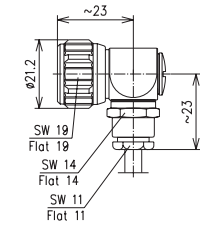
BN 55 71 71

KABELSTECKVERBINDER FÜR RG-KABEL ■ CABLE CONNECTORS FOR RG-CABLES

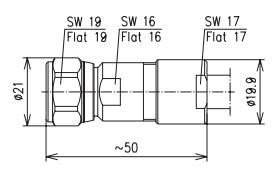
Kabel Typ Cable Type	Ω	Ausführung Version	Bestell-Nummer Part Number
RG 58 C/U RG 142 B/U RG 223/U RG 400/U	50	geklemmt clamped	BN 29 66 50 BN 72 12 80
RG 8 Typen (low loss)	50	geklemmt clamped	BN 94 50 60 BN 94 50 61
RG 213/U RG 214/U	50	geklemmt clamped	BN 92 24 50 BN 92 25 50
RG 214/U RG 393/U	50	gecrimpt crimped	BN 92 24 75
RG 214/U RG 393/U	50	geklemmt clamped	BN 72 12 83



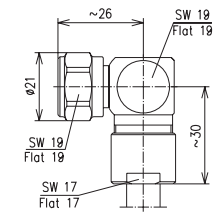
BN 29 66 50



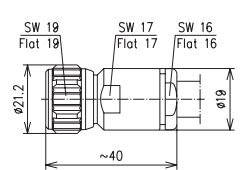
BN 72 12 80



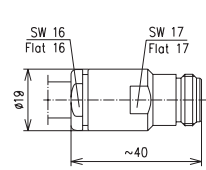
BN 94 50 60



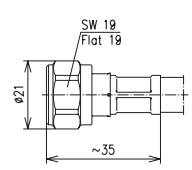
BN 94 50 61



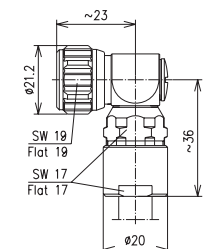
BN 92 24 50



BN 92 25 50



BN 92 24 75



BN 72 12 83

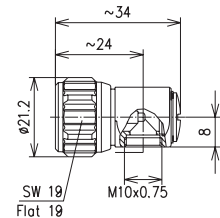
COAXIAL CONNECTORS – TYPE N

STECKERKOPF ■ CONNECTOR HEAD

Ausführung Version	Bestell-Nummer Part Number
gerade montierbar im Winkel montierbar straight mounting right angle mounting	BN 45 09 40



BN 45 09 40

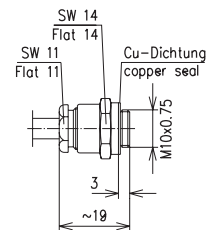


KABELABFANGUNGEN ■ CABLE ENTRIES

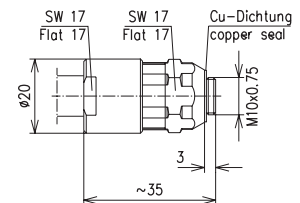
Kabel Typ Cable Type	Ausführung Version	Bestell-Nummer Part Number
RG 55 B/U RG 58 C/U RG 142 B/U RG 223/U RG 400/U	geklemmt clamped	BN 41 94 00
RG 213/U	geklemmt clamped	BN 42 01 00
RG 214/U RG 216/U RG 393/U	geklemmt clamped	BN 98 29 00
RG 214/U RG 393/U	gecrimpt crimped	BN 98 29 11



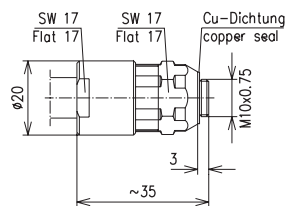
BN 41 94 00



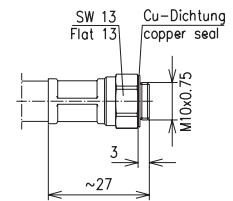
BN 42 01 00



BN 98 29 00



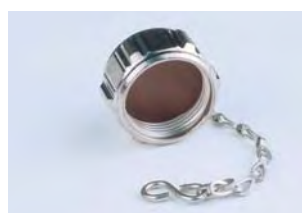
BN 98 29 11



SCHUTZKAPPEN ■ PROTECTIVE CAPS



BN 99 88 00
Schutzkappe (Cu-Legierung)
für Stecker, mit Kette
Protective cap (copper alloy)
for plug, with chain



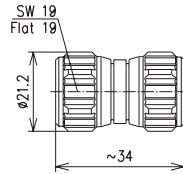
BN 29 63 00
Schutzkappe (Cu-Legierung)
für Kuppler, mit Kette
Protective cap (copper alloy)
for socket, with chain

COAXIAL CONNECTORS – TYPE N

ZWISCHENSTECKVERBINDER ■ WITHIN TYPE ADAPTORS



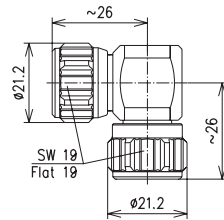
BN 29 36 50



Zwischenstecker
Adaptor, plug-plug



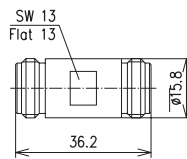
BN 70 82 50



Winkelzwischenstecker
Right angle adaptor, plug-plug



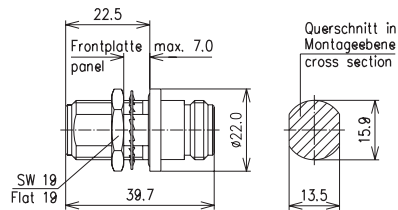
BN 29 37 50



Kupplung
Adaptor, socket-socket



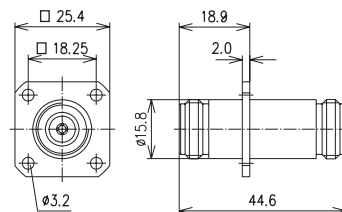
BN 94 49 50



Durchführungskupplung für Einloch-
montage (einbau- und längsdicht)
Fixed adaptor, socket-socket,
for single hole mounting
(panel and barrier sealed)



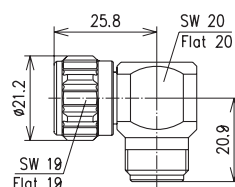
BN 94 49 51



Durchführungskupplung mit Viereckflansch
Fixed adaptor, socket-socket,
with four hole mounting flange



BN 29 97 50



Winkelsteckerkupplung
Right angle adaptor, plug-socket

COAXIAL CONNECTORS – TYPE 7-16



Der 7-16 Steckverbinder hat sich durch seine herausragenden mechanischen und elektrischen Eigenschaften zum weltweit am meisten verwendeten koaxialen Stecksystem für Mobilfunk-Sendeanlagen entwickelt.

Um eine optimale Intermodulationsdämpfung von typ. -165 dBc zu erhalten, sind alle Innen- und Außenleiterteile der SPINNER Standardausführung versilbert. Unterstützend werden ausschließlich nicht-magnetische Werkstoffe verwendet und die Anzahl der HF-Kontaktstellen ist minimiert.

Die Steckverbindung ist besonders geeignet für die Übertragung mittlerer und hoher Leistungen, u. a. im Outdoor-Bereich, bis zu einer Frequenz von 8,3 GHz. Wie bei allen anderen SPINNER Steckverbindern sind auch unsere 7-16 Stecker mit der speziellen SPINNER-Profil Überwurfmutter versehen. Diese ermöglicht in Verbindung mit der Befestigung durch Einrollen ein erhöhtes Prüfdrehmoment von bis zu 55 Nm.

The 7-16 connector has become the most widely used coaxial connection system for mobile communication systems, due to its excellent mechanical and electrical properties.

In order to achieve the industry leading intermodulation performance (typically -165 dBc), SPINNER applies silver-plating on all inner and outer conductor parts of the standard connector. As a supporting measure we use exclusively non-magnetic materials, and we have minimized the number of RF contact points.

The connection is especially suited for transmitting medium or high power signals (indoors and outdoors), up to a frequency of 8.3 GHz. Like all other SPINNER connectors our 7-16 connectors are also equipped with the special SPINNER profile coupling nut. This nut, which is fastened by flanging, allows a high test torque up to 55 Nm.

Die 50 Ω Steckverbindung 7-16 ist eine Variante des 1954 von Dr. Spinner entwickelten 6-16 Stecksystems (60 Ω). Die Bezeichnung ist abgeleitet von den metrischen Abmessungen des Innen- und Außenleiters.

The 50 Ω connector 7-16 is a variant of the connector system 6-16 (60 Ω) developed 1954 by Dr. Spinner. The designation is derived from the metric dimensions of the inner and outer conductor.

COAXIAL CONNECTORS – TYPE 7-16

Elektrisch / Electrical	IEC 60169-4	IEC	SPINNER	Bemerkung / Remark
Wellenwiderstand Characteristic impedance		50 Ω		
Frequenzbereich Frequency range	3.	7.5 GHz	8.3 GHz	
VSWR	3.	≤ 1.22		gerader Steckverbinder bis 6 GHz straight connector up to 6 GHz
Innenleiter-Kontaktwiderstand Center contact resistance	9.4.2	≤ 0.4 mΩ		anfänglich initial
Außenleiter-Kontaktwiderstand Outer contact resistance	9.8.2	≤ 0.02 mΩ		anfänglich initial
Isolationswiderstand Insulation resistance	9.1	≥ 10 GΩ		anfänglich initial
Spannungsfestigkeit in Meereshöhe Proof voltage at sea level	9.1	4 kV		50...60 Hz
Arbeitsspannung in Meereshöhe Working voltage at sea level	3.	2.7 kV		50...60 Hz
Wirksamkeit der Abschirmung Screening effectiveness	9.8.2	≥ 128 dB		

Mechanisch / Mechanical	IEC 60169-4	IEC	SPINNER	Bemerkung / Remark
Kupplungsdrehmoment Coupling torque	9.5	25 Nm	25 ... 30 Nm	
Prüfdrehmoment Proof torque		35 Nm	55 Nm	
Zugfestigkeit des Kupplungsmechanismus Tensile strength of coupling mechanism			1000 N	
Mechanische Lebensdauer Mechanical lifetime	9.5	500	10000	Betätigungen Operations
Fesselung des Innenleiters Center contact captivation				ja yes

Umwelt / Environmental	IEC 60169-4	IEC	SPINNER	Bemerkung / Remark
Klimaklasse / Climatic category	4.	55/155/56		
Temperaturbereich / Temperature range	4.	-55 ... +155 °C		
Schutzgrad / Degree of protection		IP68		gesteckt/mated

Werkstoffe und Oberflächenbehandlung / Materials and Surface Finish				
Federnde Kontaktteile Resilient contact members	hochfeste Cu-Legierung, versilbert high strength copper alloy, silver plated			
Isolation Insulation	PTFE/FEP			
Innen- und Außenleiterkontaktteile Center and outer conductor parts	Cu-Legierung, versilbert Copper alloy, silver plated			
Sonstige Metallteile Other metal parts	Cu-Legierung, glanzvernickelt Copper alloy, bright nickel plated			
Dichtungen Gaskets	Silikonkautschuk Silicone rubber			

KOAXIALE STECKVERBINDER – SERIE 7-16



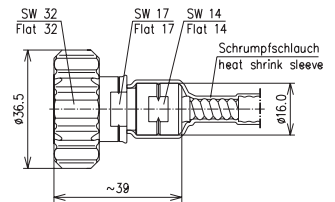
COAXIAL CONNECTORS – TYPE 7-16

KABELSTECKVERBINDER FÜR SCF14-50 ■ CABLE CONNECTOR FOR SCF14-50

Ausführung Version	Ω	Bestell-Nummer Part Number
CAF® Schrumpfschlauch CAF® Heat shrink sleeve	50	BN 74 14 60



BN 74 14 60

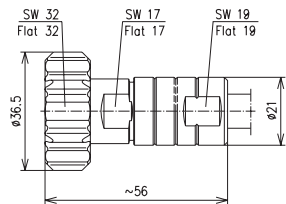


KABELSTECKVERBINDER FÜR SCF38-50 ■ CABLE CONNECTORS FOR SCF38-50

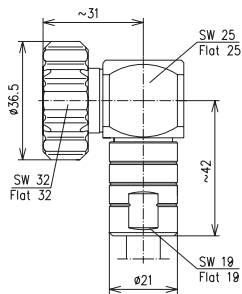
Ausführung Version	Ω	Bestell-Nummer Part Number
CAF® Profildichtung CAF® Profile gasket	50	BN 84 73 39 BN 84 73 73 BN 71 03 39



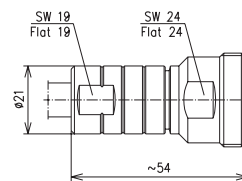
BN 84 73 39



BN 84 73 73



BN 71 03 39

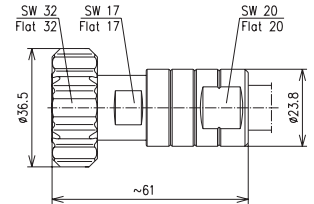


KABELSTECKVERBINDER FÜR SCF/UCF12-50 ■ CABLE CONNECTORS FOR SCF/UCF12-50

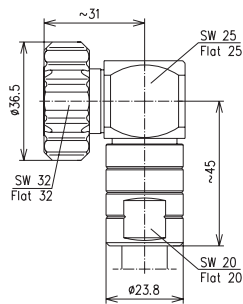
Ausführung Version	Ω	Bestell-Nummer Part Number
CAF® Profildichtung CAF® Profile gasket	50	BN 84 73 59 BN 84 73 57 BN 71 03 59



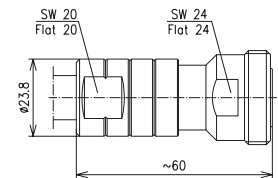
BN 84 73 59



BN 84 73 57



BN 71 03 59

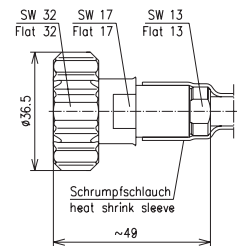


KABELSTECKVERBINDER FÜR LCF14-50 ■ CABLE CONNECTOR FOR LCF14-50

Ausführung Version	Ω	Bestell-Nummer Part Number
CAF® O-Ring	50	BN 74 14 45



BN 74 14 45

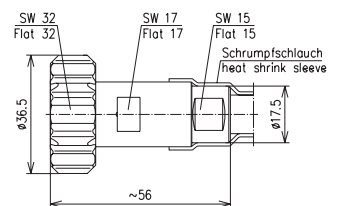


KABELSTECKVERBINDER FÜR LCF38-50 ■ CABLE CONNECTOR FOR LCF38-50

Ausführung Version	Ω	Bestell-Nummer Part Number
CAF® O-Ring	50	BN 84 73 69



BN 84 73 69



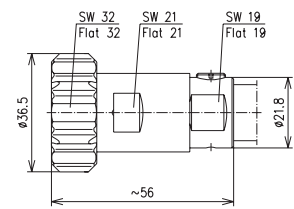
COAXIAL CONNECTORS – TYPE 7-16

KABELSTECKVERBINDER FÜR LCF12-50 ■ CABLE CONNECTORS FOR LCF12-50

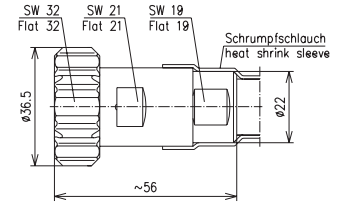
Ausführung Version	Ω	Bestell-Nummer Part Number
CAF® Plast 2000®	50	BN 84 73 68
CAF® O-Ring	50	BN 84 73 89
CAF® Plast 2000®	50	BN 84 73 56
CAF® O-Ring	50	BN 84 73 91
CAF® Plast 2000®	50	BN 71 03 68
CAF® O-Ring	50	BN 71 03 89



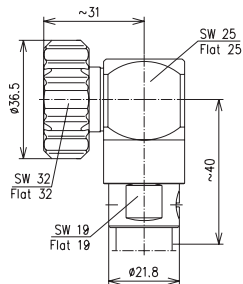
BN 84 73 68



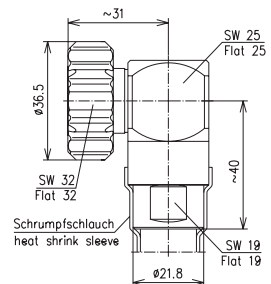
BN 84 73 89



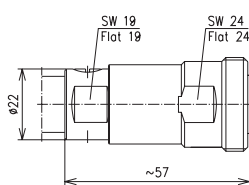
BN 84 73 56



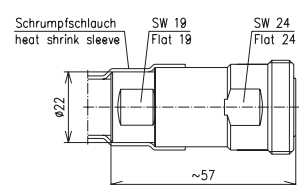
BN 84 73 91



BN 71 03 68



BN 71 03 89



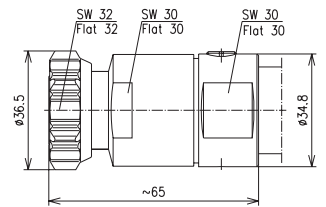
KABELSTECKVERBINDER FÜR LCF/UCF78-50 ■ CABLE CONNECTORS FOR LCF/UCF78-50

Ausführung Version	Ω	Bestell-Nummer Part Number
CAF® Plast 2000®	50	BN 84 48 40
TOPSPIN® O-Ring	50	BN 85 43 18*
CAF® Plast 2000®	50	BN 84 48 50
CAF® O-Ring	50	BN 84 48 51
CAF® Plast 2000®	50	BN 65 56 40
TOPSPIN® O-Ring	50	BN 65 43 18*

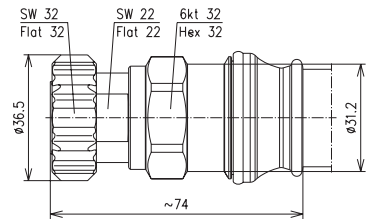
*) verwendbar für Al- und Cu-Kabel
suitable for aluminium and copper cables



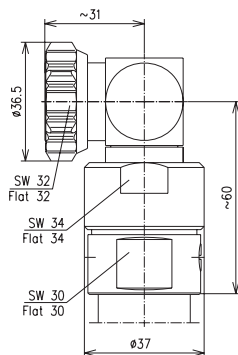
BN 84 48 40



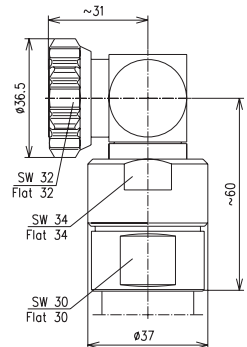
BN 85 43 18*



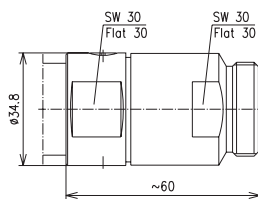
BN 84 48 50



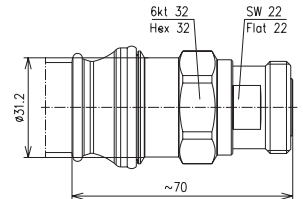
BN 84 48 51



BN 65 56 40



BN 65 43 18*



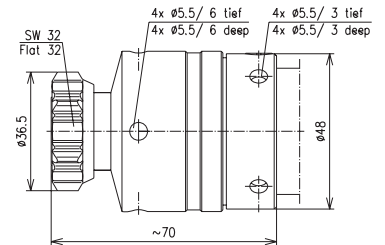
COAXIAL CONNECTORS – TYPE 7-16

KABELSTECKVERBINDER FÜR UCF/LCFS114-50 ■ CABLE CONNECTORS FOR UCF/LCFS114-50

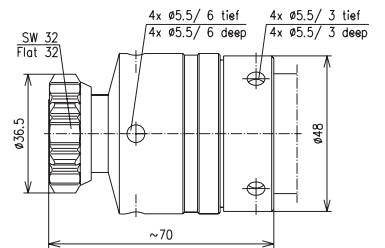
Ausführung Version	Ω	Bestell-Nummer Part Number
CAF® Plast 2000®	50	BN 84 48 42
CAF® O-Ring	50	BN 84 48 43
CAF® Plast 2000®	50	BN 65 56 42
CAF® O-Ring	50	BN 65 56 43



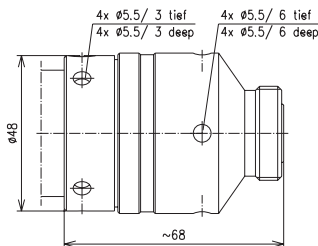
BN 84 48 42



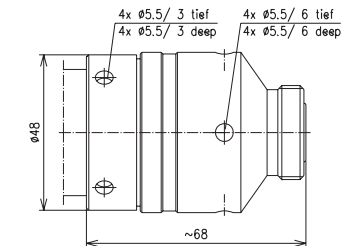
BN 84 48 43



BN 65 56 42



BN 65 56 43

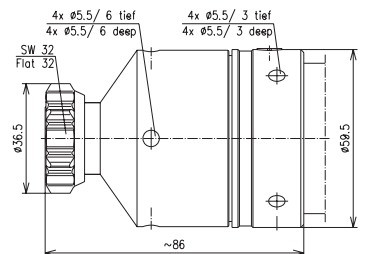


KABELSTECKVERBINDER FÜR LCF158-50 ■ CABLE CONNECTORS FOR LCF158-50

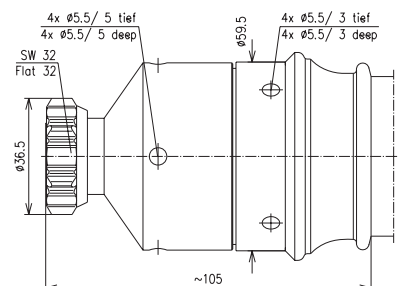
Ausführung Version	Ω	Bestell-Nummer Part Number
CAF® Plast 2000®	50	BN 84 48 44
TOPSPIN® O-Ring	50	BN 84 48 60*
CAF® Plast 2000®	50	BN 65 56 44
TOPSPIN® O-Ring	50	BN 65 56 60*



BN 84 48 44



BN 84 48 60*



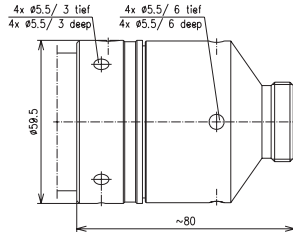
*) verwendbar für Al- und Cu-Kabel
suitable for aluminium and copper cables

COAXIAL CONNECTORS – TYPE 7-16

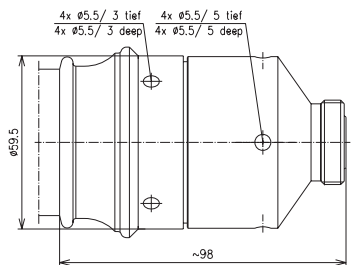
KABELSTECKVERBINDER FÜR LCF158-50 ■ CABLE CONNECTORS FOR LCF158-50



BN 65 56 44



BN 65 56 60*

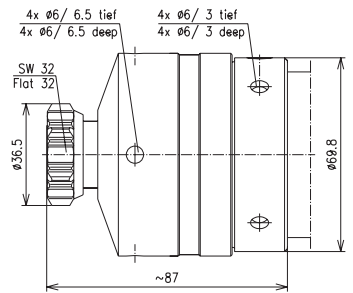


KABELSTECKVERBINDER FÜR LCF214-50 ■ CABLE CONNECTORS FOR LCF214-50

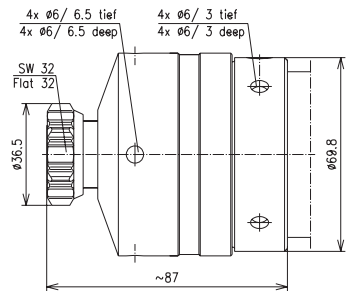
Ausführung Version	Ω	Bestell-Nummer Part Number
CAF® Plast 2000®	50	BN 84 48 73
CAF® O-Ring	50	BN 84 48 63
CAF® Plast 2000®	50	BN 65 56 73
CAF® O-Ring	50	BN 65 56 63



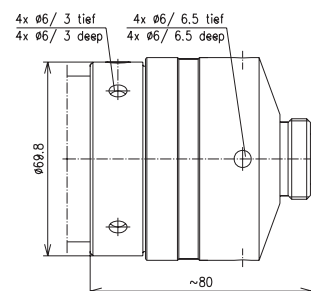
BN 84 48 73



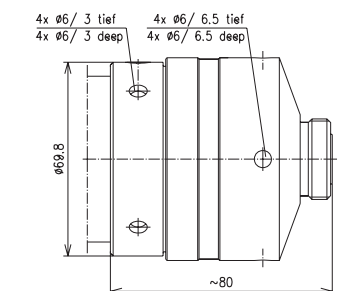
BN 84 48 63



BN 65 56 73



BN 65 56 63



KOAXIALE STECKVERBINDER – SERIE 7-16



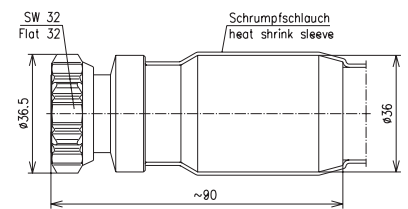
COAXIAL CONNECTORS – TYPE 7-16

KABELSTECKVERBINDER FÜR RADIAFLEX® ■ CABLE CONNECTORS FOR RADIAFLEX®

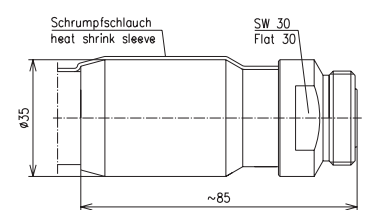
Kabel Typ Cable Type	Ω	Ausführung Version	Bestell-Nummer Part Number
RADIAFLEX® 78-50	50	Schrumpfschlauch Heat shrink sleeve	BN 55 71 52 BN 55 71 53
RADIAFLEX® 114-50	50	Schrumpfschlauch Heat shrink sleeve	BN 55 71 63
RADIAFLEX® 158-50	50	Schrumpfschlauch Heat shrink sleeve	BN 55 71 73



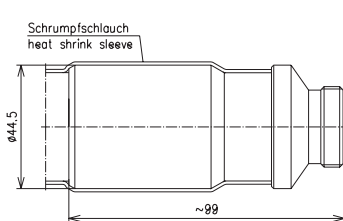
BN 55 71 52



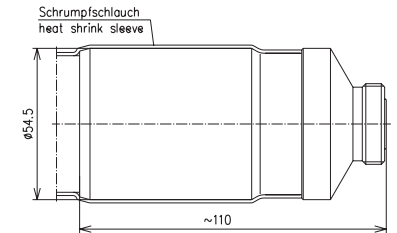
BN 55 71 53



BN 55 71 63



BN 55 71 73

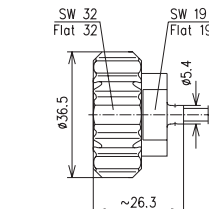


KABELSTECKVERBINDER FÜR RG-KABEL ■ CABLE CONNECTORS FOR RG-CABLES

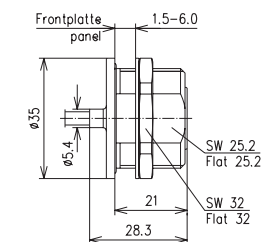
Kabel Typ Cable Type	Ω	Ausführung Version	Bestell-Nummer Part Number
RG 402/U	50	gelötet soldered	BN 80 76 25
RG 402/U Semirigid flexible 141	50	gelötet soldered	BN 80 77 88 BN 80 77 06 BN 80 77 50
RG 401/U Semirigid flexible 250	50	gelötet soldered	BN 80 76 21
RG 401/U	50	gelötet soldered	BN 80 77 33 BN 80 77 60
RG 214/U RG 393/U	50	geklemmt clamped	BN 95 18 20 BN 80 76 80 BN 95 19 20



BN 80 76 25



BN 80 77 88

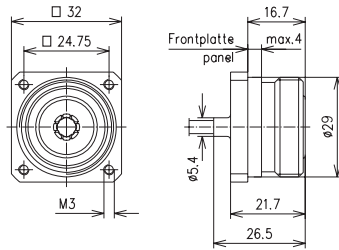


COAXIAL CONNECTORS – TYPE 7-16

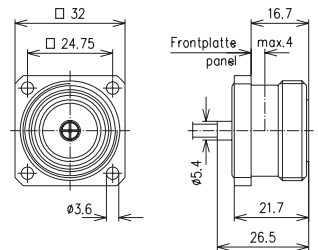
KABELSTECKVERBINDER FÜR RG-KABEL ■ CABLE CONNECTORS FOR RG-CABLES



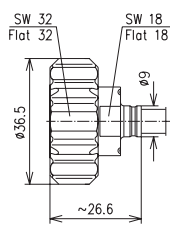
BN 80 77 06



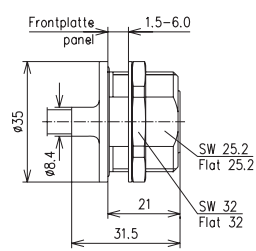
BN 80 77 50



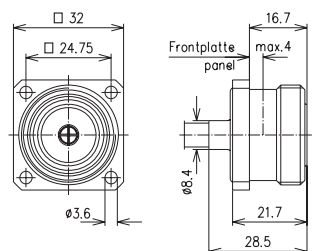
BN 80 76 21



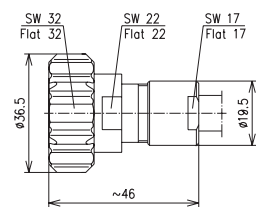
BN 80 77 33



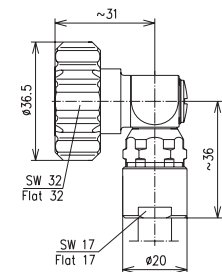
BN 80 77 60



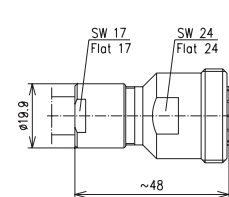
BN 95 18 20



BN 80 76 80



BN 95 19 20



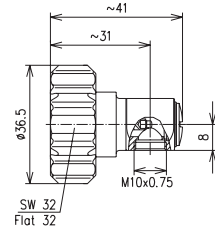
COAXIAL CONNECTORS – TYPE 7-16

STECKERKOPF ■ CONNECTOR HEAD

Ausführung Version	Bestell-Nummer Part Number
gerade montierbar im Winkel montierbar straight mounting right angle mounting	BN 45 09 95



BN 45 09 95

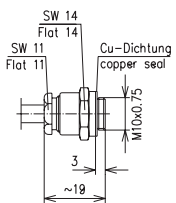


KABELABFANGUNGEN ■ CABLE ENTRIES

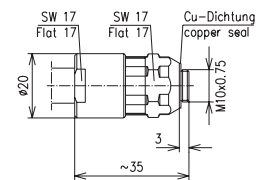
Kabel Typ Cable Type	Ausführung Version	Bestell-Nummer Part Number
RG 55 B/U RG 58 C/U RG 142 B/U RG 223/U RG 400/U	geklemmt clamped	BN 41 94 00
RG 213/U	geklemmt clamped	BN 42 01 00
RG 214/U RG 216/U RG 393/U	geklemmt clamped	BN 98 29 00
RG 214/U RG 393/U	gecrimpt crimped	BN 98 29 11



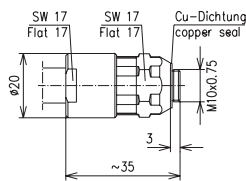
BN 41 94 00



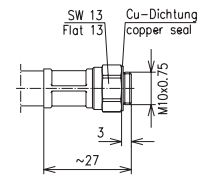
BN 42 01 00



BN 98 29 00



BN 98 29 11



SCHUTZKAPPEN ■ PROTECTIVE CAPS



BN 23 90 02
Schutzkappe (Cu-Legierung)
für Stecker, mit Kette
Protective cap (copper alloy)
for plugs with chain



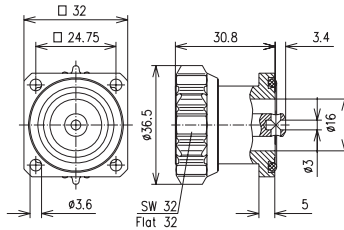
BN 23 89 50
Schutzkappe (Cu-Legierung)
für Kuppler, mit Kette
Protective cap (copper alloy)
for sockets with chain

COAXIAL CONNECTORS – TYPE 7-16

GEHÄUSESTECKVERBINDER ■ FIXED CONNECTORS



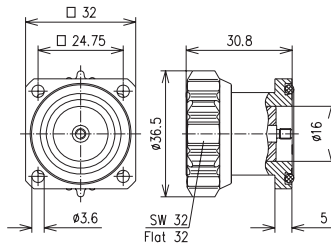
BN 95 47 16



Gehäusestecker mit Viereckflansch
Abdichtung zum Gehäuse mit O-Ring,
Innenleiter mit Lötanschluss
Fixed plug with four hole mounting flange,
sealing to the panel with O-Ring,
inner conductor with soldering connection



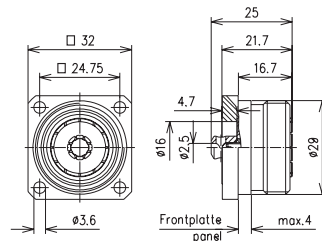
BN 95 47 65



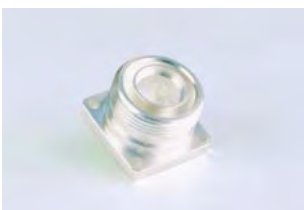
Gehäusestecker mit Viereckflansch
Abdichtung zum Gehäuse mit O-Ring,
Innenleiter mit Außengewinde M3
Fixed plug with four hole mounting flange,
sealing to the panel with O-Ring,
inner conductor with M3 male thread



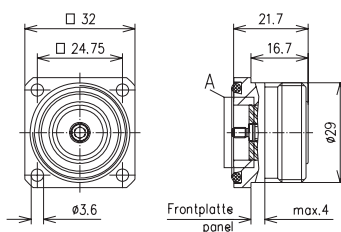
BN 95 45 10



Gehäusekuppler mit Viereckflansch,
mit Innenleiter-Lötanschluss
(Außenleiterkontaktbuchse geschlitzt)
Fixed socket with four hole mounting flange,
with inner conductor soldering connection
(with slotted outer conductor)



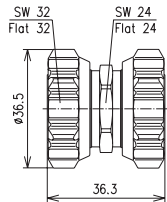
BN 95 46 84



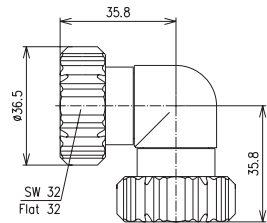
Gehäusekuppler mit Viereckflansch
Abdichtung zum Gehäuse mit O-Ring,
Innenleiter verdrehungsgesichert
mit Außengewinde M3
Fixed socket with four hole mounting flange,
sealing to the panel with O-Ring,
captivated inner conductor with M3 male thread

COAXIAL CONNECTORS – TYPE 7-16

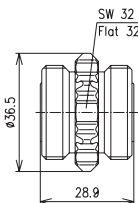
ZWISCHENSTECKVERBINDER ■ WITHIN TYPE ADAPTORS



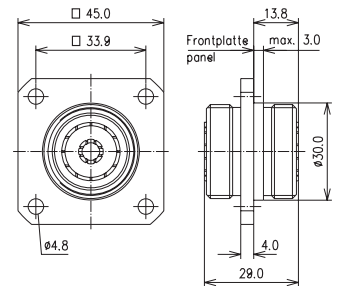
BN 39 33 70
Zwischenstecker
Adaptor, plug-plug



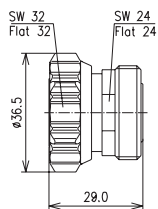
BN 94 47 02
Winkelzwischenstecker
Right angle adaptor, plug-plug



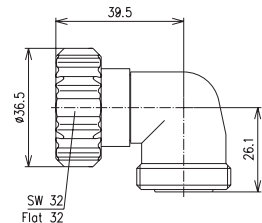
BN 19 64 00
Kupplung
Adaptor, socket-socket



BN 80 84 00
Durchführungskupplung mit Viereckflansch
Fixed adaptor, socket-socket
with four hole mounting flange

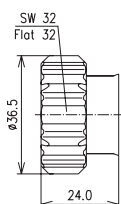


BN 75 64 04
Steckerkupplung
(Schutz für Messanschluss)
Adaptor, plug-socket
(port saver)

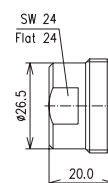


BN 29 64 00
Winkelsteckerkupplung
Right angle adaptor, plug-socket

KURZSCHLÜSSE ■ SHORT CIRCUIT



BN 80 64 00
Kurzschluss, Stecker
Short circuit, plug



BN 80 65 00
Kurzschluss, Kuppler
Short circuit, socket